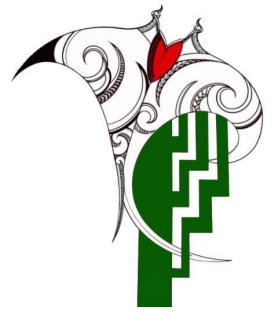


Te Kura o Te Kauaeranga

Thames South School



PĀNUI - NEWSLETTER

Rāmere 12 Paenga-Whāwhā 2024

“Ko ō tātou whakapono ngā kaiwehewehe i a tātau. Ko ō tātau moemoeā me ō tātau pākatokato ngā kaiwhakakotahi i a tātau”

It is our truths that are the actors of separation. It is our dreams and difficulties that act to unify us.

Ideologies separate us. Dreams and adversity bring us together.

Te Wharehuia Milroy

Kia ora e te whānau,

Term one has had some big whakanuia for our kura, tamariki, and community. These include our Kansai manuhiri learning alongside us, our leadership development camp, Surf Life Rescue learning in Waihi, our recent mural creation with Muchukanda, our whole kura camp, our Kai Sovereignty – Māra kai mahitahi with The Basket Hauraki, our Ka Ora Ka Ako – School Lunch programme, mahi with Matua: Jayjay & Beau, our Easter Raffle fundraiser, kaiako went to the M9 – Ka tohe au! Ka tohe au! I am the Sovereign PLD, we took part in the beach clean up along our local shores, our swimming sports, and next week, we have our Ngākau Symposium running for the full term break!

All of the mahi, time, and rauemi that we put into investing into our tamariki and kura are pitched at helping all of our people (tamariki, pakeke and kaumātua) realise their fullest potential. We can't do this alone. We need all of us to be in the waka, and we all need our hoe (paddle) heading towards our moemoeā. Let these be what brings us together.

Kia noho haumaruru i ngā rā hararei. Be safe during the upcoming term break and we will see you for more exciting kaupapa in term 2. Kura re-opens Rāhina 29 o Paenga-whāwhā.

Nāku noa nā

Whaea Barbara Hetaraka

**HAVE
YOUR
SAY**



ON THAMES POOL OPTIONS

15 April – 6 May 2024



FOR MORE INFO
AND SURVEY FORMS
tcdc.govt.nz/poolsurvey
OR VISIT THAMES COUNCIL OFFICE



ADMIN UPDATE

Important Dates:

12th April - End of Term 1

14th April - Harvest & Replant - Hauraki Terrace Gardens - 1 p.m. to 5 p.m.

Term break - throughout our term break our Ngākau Symposium will be based here at kura and will be open for whānau to come and have a jack or do some mahi behind the scenes. Please contact the front office if you are able to tautoko.

29th April - Start of Term 2

1st May - Board hui

22nd May - Tackle Tournament

29th May - Board hui

20th June - Duffy Books Performance

26th June - Ki-o-Rahi Tournament

5th July - Last day of Term 2

CELEBRATIONS

Thank you to everyone who supported our Easter Raffle, watch this space for information regarding our Term 2 Raffle - this will be to fundraise for a concrete floor for our kayak storage and shelving..

Congratulations to the following winners, we hope you enjoyed your Easter treats.

1st prize, Gage Whānau

2nd prize, Reece H

3rd prize, Neil Hall

Mini league basketball term 2.

No experience needed come and learn basketball skills and play fun games.

Starts May 6th

When - Mondays

5pm-6pm- 9/10 yr olds

6pm-7pm- 11+

Tuesday's

3.30-4.15pm- 5/6yr olds

4.15pm-5pm-7/8yr olds.

Where- Thames High School gym.

Cost- \$40 for the term.

Please register to

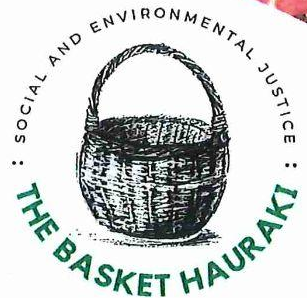
adrienehodgson@icloud.com

Before May 6th.



**SHARE KAI
GROW COMMUNITY**

**HARVEST AND REPLANT
HAURAKI TERRACE GARDENS
SUNDAY APRIL 14TH 1PM - 5PM**



We'd love your help to:

- harvest the kūmara for the local community
- help clear the beds
- prep the ground (compost) ready for planting
- plant the community winter crop of cabbages, broccoli, cauliflower and silverbeet

We'll have some tools but any you have from home would be helpful:
(garden forks, buckets, shovels, garden trowels)

FREE SAUSAGE SIZZLE



thebasket.hauraki@gmail.com



<https://www.facebook.com/TheBasketHauraki/>



Contact Jo with any pātai/questions: 0273176519

Kura Updates

Te Awatea

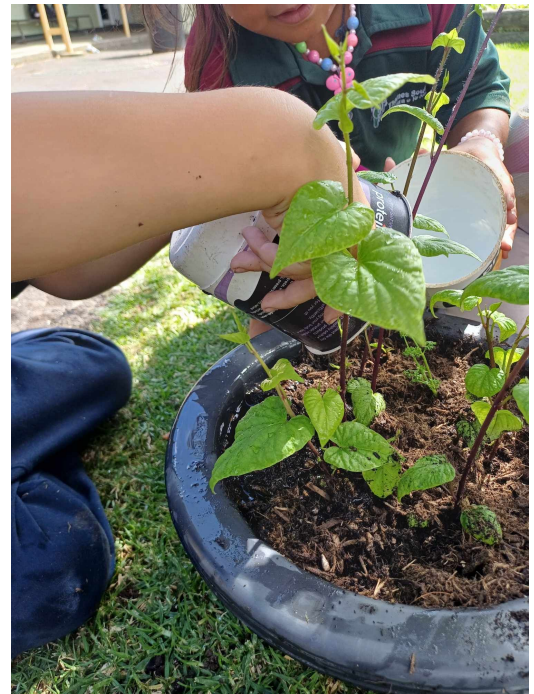
Since the end of February tamariki in Te Awatea have been nurturing some kumara and carrot tops, watching and waiting for them to grow. We started them off by sitting them in a dish of water.

There was excitement when the tiny green shoots appeared and it was great to see them sprout higher every day. We have written about them and drawn pictures of the various stages and of course, we have taken lots of photos.

When the shoots were getting long, we transplanted them into a pot and we have been watering them each week.

We tied string to the window catches and it has been wonderful to watch the kumara vines wind their way up the strings.

WE HAVE GOT THE COOLEST POT PLANT AROUND



Kura Updates

Te Haeata

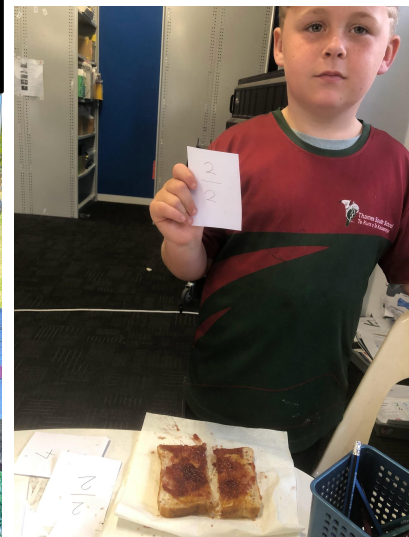
Kia ora e te whānau,

Te Haeata have had a busy terenga. In relation to our Tiriti o Waitangi kaupapa we have been learning about taonga. We have discussed what makes a taonga a treasure, what is important to us, our whānau, and culture, what we value and must protect, as well as exploring materials and symbolism.

Our tamariki loved having a chance to try whakairo / carving a waka with Matua Trif. They loved using a range of tools such as chisels and hammers.

A pāngarau highlight was our fraction toast lesson. Learning to recognise and make halves, quarters, thirds, and fifths with a tasty toast reward to help make that learning stick!

We had a mīharo end of term trip to the Gym Sports Club in Kopu. Our tamariki testing out their gymnastic skills on the bars, beams, trapeze, and trampolines.



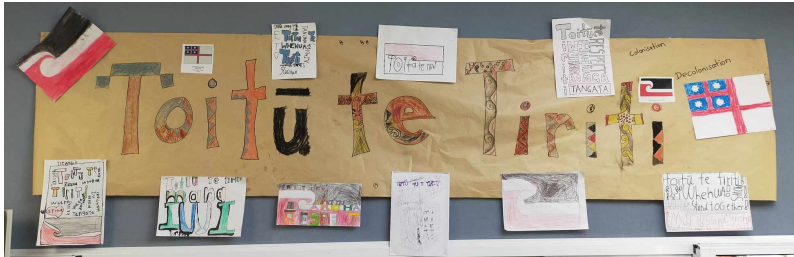
Kura Updates

Te Hāpai Ō



“Kia whakatōmuri te haere whakamua.”

We are walking backwards into the future, with our eyes fixed on the past.



Our mahi this term has focused on Te Tiriti o Waitangi, and how it has been dishonored and misinterpreted. We have discussed why knowing and honoring the past is important to create a better future.

“I look to the past...”

Kia whakatōmuri te haere whakamua,
So that my ancestors can help me.

Kia whakatōmuri te haere whakamua,
So we can learn from the past.

Kia whakatōmuri te haere whakamua,
So we can fix our mistakes.

Kia whakatōmuri te haere whakamua,
To make the future better.

Kia whakatōmuri te haere whakamua,
So we will toitū te Tiriti!

Te Raihe

“I look to the past...”

Kia whakatōmuri te haere whakamua,
So we can remember the important
sacrifices made for us.

Kia whakatōmuri te haere whakamua,
So we learn from the past,

Kia whakatōmuri te haere whakamua,
So that we can prevent bad things from
happening again.

Kia whakatōmuri te haere whakamua,
So we are always growing.

Kia whakatōmuri te haere whakamua,
So that we can change the future!

Kaycee

We enjoyed our kura āporo harvest by making yummy āporo crumble!

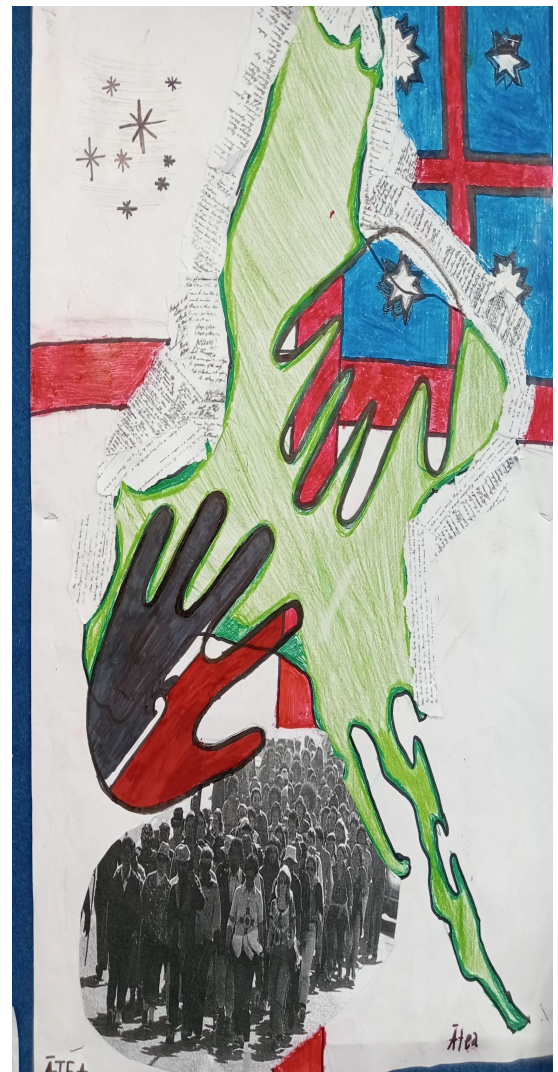


Ngā Mataamua ō te Kura - Te Amorangi

Kātahi te wāhanga pōnana ko tēnei. Te noho tahi ā kura, te noho rangatira ki te riu o Whangaiterenga, te māra kai, te whutupōro, ā hoki, te neke akomanga!

Wow whānau, term 1 down and our tamariki have shown nothing but resilience with all the challenges they've overcome. From our leadership camp, our whole school camp, Rippa Rugby, Tuna investigations, and even moving to a whole new classroom. All whilst staying on top of their classroom mahi.

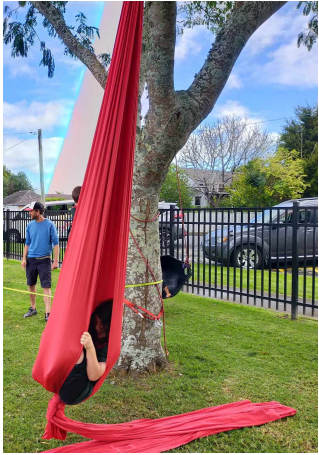
Our focus has been, solidarity, resilience and unity as a whānau. Our goal next term is to reinstate the Mana Tama and Mana Kotiro kaupapa with a strong focus on teamwork. Kia Haumarū nga whakatā whānau!!!



Term 2 Whakatauki Focus:

“Who are you to question your worth when your tupuna fought to get you here?”

Kura Updates



Hangin' around with Matua Trif...

Kūmara Harvest... Aue! He nui ngā kūmara



Kura Updates

Fun Day and Swimming Sports



Te Kawenga

Kua tūhura e tō mātou tamariki ki tō tātou nei taiao, kua rapu rātou i ngā mea ōrite ki ngā tae i ō rātou kāri. Kua tirotirohia anō e tō mātou nei tamariki he aha ngā hākinakina e tino pai ana ki a rātou, ka mahi rātou ia ata hei whakaoho i te tīnana!

"Ko tō mātou waka ko te Rangimārie!"



Tirohia e ngā paku mīharo e kaha ana ki te pānui I ō rāua pukapuka hou!. Nā Whaea Janna I koha mai ēnei ki a Te Kawenga! Ahakoa kua haere koe ki tētahi atu kura, kei kōnei tōnu tō manaakitanga mō mātou! Nei rā te tuku mihi ki a koe!





**THAMES EARLY CHILDHOOD
EDUCATION CENTRE**

100 HAVEN STREET
Moanataiari Thames
07 8687028
tecec@xtra.co.nz



Our fees:

Birth-3 years old
\$6 per hour
Minimum of 20 hours

3 & 4 Year olds
30 free hours

Additional hours \$6 per hour

Hours: 8am-3pm
Monday- Friday

Spaces available now!

Ask us about extended hours!



**THAMES EARLY CHILDHOOD
EDUCATION CENTRE**

100 HAVEN STREET
Moanataiari Thames
07 8687028
tecec@xtra.co.nz



Our fees:

Birth-3 years old
\$6 per hour
Minimum of 20 hours

3 & 4 Year olds
30 free hours

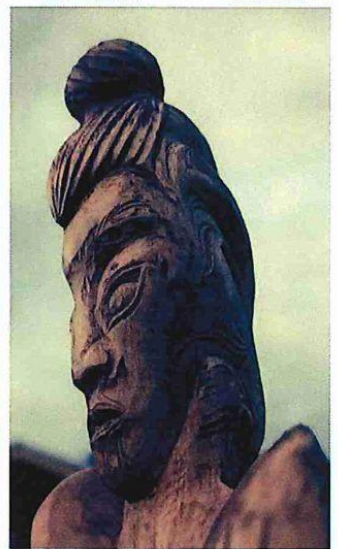
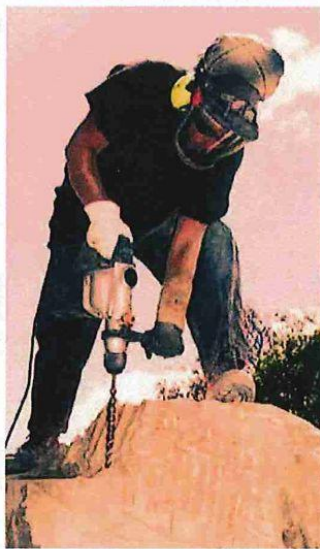
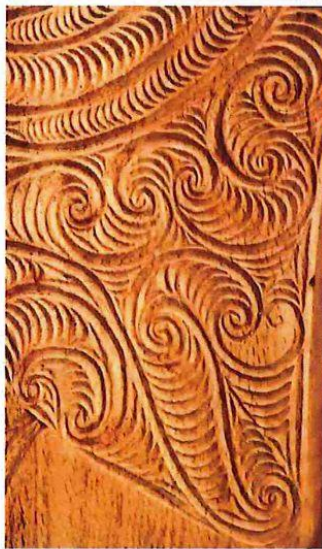
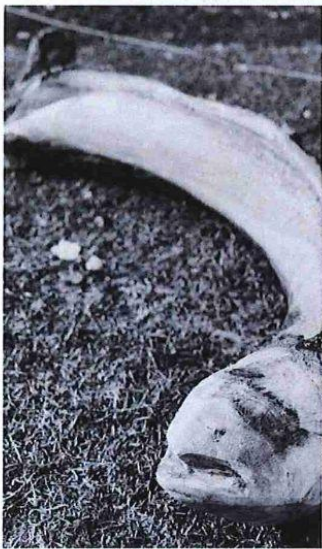
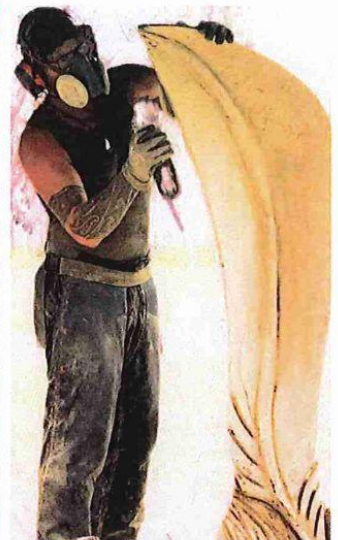
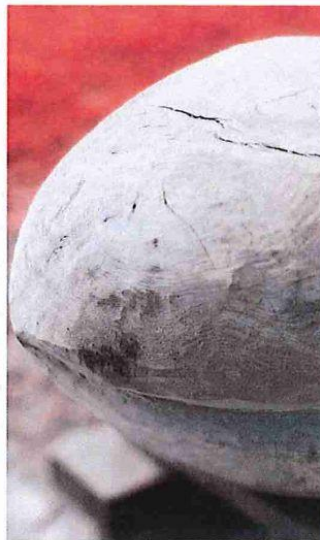
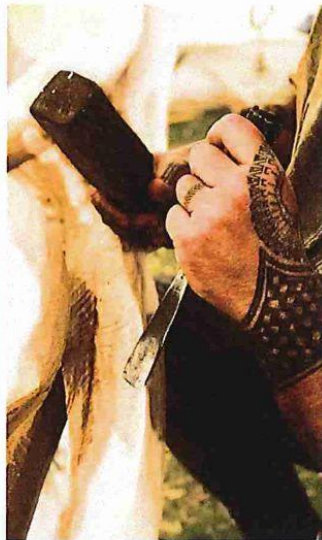
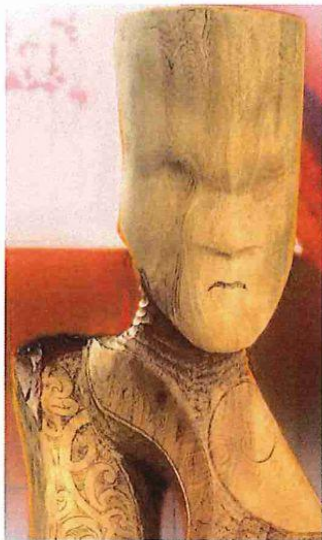
Additional hours \$6 per hour.

Hours: 8am-3pm Monday- Friday

Spaces available now!

Ask us about extended hours!





Ngākau

CARVING SYMPOSIUM

18th-27th April 2024

Auction 27th April

Nau mai
haere mai ki
Te Wānanga Whakairo
o Te Ngākau

Te Kura o Te Kauaeranga
(Thames South School)
307 Rolleston Street

Event Information



SCAN ME





Nau mai! Welcome to Te Rekamauroa ki Tainui!

REGISTER FOR 2024 INTAKES TODAY!

www.terekamauroakitainui.com

Want to begin your Māori language journey or strengthen your reo and tikanga? Te Rekamauroa ki Tainui is a Māori language course available for kaiako and whānau with enrolments now open for Term 2. There is some traveling involved but car pooling can be arranged.

COURSE OVERVIEW

Te Rekamauroa is phase one of our unique Te Ahu o Te Reo Māori programme; tailored and contextualised for the education sector incorporating local dialects, history, stories, songs, haka and narratives.

Tōngakingaki - Commitment

Hours: 120hrs total - 80hrs in class, 30hrs SDL, 10hrs optional tutorials.

Times: 6 x Full-days: 8:30am-3:30pm. 3 x Mon evenings 6:30pm-8:30pm. 4 x Tues evenings: 6:30pm-8:30pm

Duration: 10 weeks.

Release Days: One Friday (full-day).

Ngā Taumata - Levels

Level 1 – Beginners (English mode of delivery)

Level 2 – Advanced Beginners (English mode of delivery with minimal use of te reo Māori)

Level 3 – Introductory Intermediate (English mode of delivery with increasing use of te reo Māori)

Level 4 – Intermediate (Bilingual mode of delivery)

Level 5 – Advanced Intermediate (Bilingual mode of delivery with minimal use of English)

Level 6 – Proficient (Total immersion mode of delivery)

Level 7 – Advanced Proficient (Total immersion mode of delivery)